

KEWA HEALTH

Healthy People, Healthy Community, Healthy Lifestyles



NEWSLETTER

DECEMBER 2025

Welcome our new Chief Operations Officer



Jason Pitts, Chief Operations Officer

Jason Pitts has a diverse work experience in the healthcare industry and has joined the team as Chief Operations Officer at Kewa Pueblo Health Corporation in December. Prior to this role, He served as Chief Operations Officer at Pueblo Community Health Center, in Pueblo Colorado. Jason began his career as a Registered Medical Assistant in Colorado Springs and has held a variety of management roles in various clinic settings, including residency training programs, hospital owned practices and Federally Qualified Health Centers. Overall, Jason Pitts has accumulated over 25 years of experience in leadership and management within the healthcare industry.

Jason has a comprehensive education history and has earned a Master of Business Administration (M.B.A.) from Colorado Technical University. Prior to that, a Master of Science (M.S.) in Business Technology.

Jason also holds a Bachelor of Science (B.S.) in Health Care Administration/Management and Associate of Applied Sciences in Medical Assisting, from Denver Technical College.

Additionally, Jason is recognized as a Fellow of the American College of Medical Practice Executives/MGMA and has been a certified member since 2001.

Q&A with Jason

What is your role at KPHC? Chief Operations Officer

What aspect of your role do you enjoy the most? I enjoy working with staff to solve issues, provide necessary resources and achieve goals.

What is your favorite part about working at KPHC? The people, full stop! The staff and the community members that I have met have been so welcoming.

Describe yourself in 3 words. Collaborative, Innovative and Dedicated

Tell us something about you that most people don't know. I know how to ride a unicycle and a regular bike backwards. Its been a long time but I think I can still do it.

WWW.KP-HC.ORG



Holiday Eye Safety

One of the more popular gifts for children are NERF guns and other projectile type toys. The darts seem soft and harmless, but eye injuries in adults and children are common injuries that we see here at Santo Domingo in the Eye Clinic from projectile type toys.

What makes these toys dangerous?

These projectiles hit the eye at high velocities- up to 170 feet per second! They can cause corneal abrasions, internal and external bleeding of the eye, cataracts, trauma related inflammation, retinal detachment, and glaucoma. Some of these injuries can lead to permanent vision loss.

Projectile firing toys are not recommended for any child. If you do allow your children to play with them, consider safety eyewear for adults and children in the vicinity of play with these toys.

Employee Spotlight



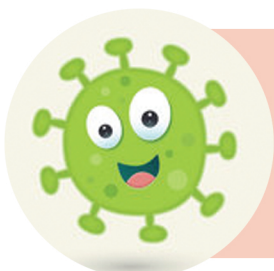
Kateri Largo
Patient Registration Representative

This month, Santa paid a special visit to Kateria, our Patient Registration Representative, whose professionalism and compassion help create a welcoming first impression for our patients.

KPHC Employees of the year



Dr. Stacia M. Jacobi-Garcia, M.S., O.D., M.H.A.
Director of Optometry
Interim Chief Operations Officer



April R. Segura, RN
Infection Preventionist



Holiday Arts and Crafts Fair



DEC 11TH **DEC 19TH**

9am - 2pm Santo Domingo Health Center
Rebecca Ondelacy Conference Room

For questions contact Mary Abeita at
505-465-1162 or by email mabeita@kp-hc.org

Santo Domingo Health Center
85 West Highway 22 • Santo Domingo, NM 87052
505-465-3060 | www.kp-hc.org



Santo Domingo Health Center will be closed

Christmas Eve
Wednesday, December 24th, 2025 1pm-5pm

Christmas Day
Thursday, December 25th, 2025 8am-5pm

Regular business hours will resume on
Friday, December 26th, 2025

Santo Domingo Health Center has contracted with FoneMed Nurse Triage Service to provide our patients with medical advice when the clinic is closed. You will get a recording message, option 1 will be if you want to schedule an appointment but our clinic is closed. You can leave a message and we will call you back once we open again. Option 9 will transfer the calls to our Triage Nurse Line to speak with a live nurse.

If you have a medical emergency
please call 911



Santo Domingo Health Center
85 West Highway 22 • Santo Domingo, NM 87052
505-465-3060 | www.kp-hc.org

HOLIDAYS AT KPHC

SANTO DOMINGO CHRISTMAS PARADE



KPHC CHRISTMAS CELEBRATION





WELCOME OUR NEW STAFF MEMBERS

Jennifer Fisher, HR Generalist
Dr. Jessica Neill, Dentist
Norman Calabaza, Security Guard
Jason Pitts, Chief Operations Officer

EMPLOYEES OF THE MONTH NOVEMBER 2025

Jinelle Goodwin
Public Health Nurse
Public Health

Treva Baca
Administrative & Clinical Coordinator
Primary Care

CAREERS

Join our team

Current Openings:

Compliance Specialist
Behavioral Health Therapist
Director of Pharmacy Services
PRN - Registered Nurse I/II/III
Safety Manager
Payroll Specialist
Director of HIMS



SCAN TO APPLY

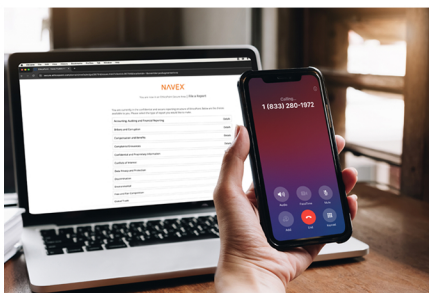


FONEMED

After-Hours Nurse Triage Line

Santo Domingo Health Center has contracted with FoneMed. An Nurse Triage Service to provide our patients with medical advice when the clinic is closed. After-Hours, you will get a recording message, option 1 will be if you want to schedule an appointment but our clinic is closed. You can leave a message and we will call you back once we open again.

Option 9 will transfer the calls to our After-Hours Triage Nurse Line to speak with a live nurse.



NAVEX™

Santo Domingo Health Clinic

Ethics Reporting Hotline Is Now Available!

We are listening! If for some reason there is an issue when you come to our facility and our staff is not able to resolve your matter to your satisfaction, please let us know. EthicsPoint is a comprehensive and confidential reporting tool created by NAVEX.



Santo Domingo Health Center
POB 340 | 85 West Highway 22
Santo Domingo, NM 87052
505-465-3060
WWW.KP-HC.ORG

Hours of Operation:

Monday, Tuesday,
Thursday, Friday
8:00 AM - 5:00 PM
Wednesday
1:00 PM - 5:00 PM

Ensuring health and wellness through excellence in health care with respect for culture